



# StarOffice™ 8 Office Suite Beta Version

---

Guide to New Features

**Copyright 2005 Sun Microsystems, Inc. 4150 Network Circle, Santa Clara, CA 95054 U.S.A. All rights reserved.**

This product or document is protected by copyright and distributed under licenses restricting its use, copying, distribution, and decompilation. No part of this product or document may be reproduced in any form by any means without prior written authorization of Sun and its licensors, if any. Third-party software, including font technology, is copyrighted and licensed from Sun suppliers.

Parts of the product may be derived from Berkeley BSD systems, licensed from the University of California. UNIX is a registered trademark in the U.S. and other countries, exclusively licensed through X/Open Company, Ltd.

Sun, Sun Microsystems, the Sun logo, docs.sun.com, AnswerBook, AnswerBook2, StarOffice and Solaris are trademarks or registered trademarks of Sun Microsystems, Inc. in the U.S. and other countries. All SPARC trademarks are used under license and are trademarks or registered trademarks of SPARC International, Inc. in the U.S. and other countries. Products bearing SPARC trademarks are based upon an architecture developed by Sun Microsystems, Inc.

The OPEN LOOK and Sun™ Graphical User Interface was developed by Sun Microsystems, Inc. for its users and licensees. Sun acknowledges the pioneering efforts of Xerox in researching and developing the concept of visual or graphical user interfaces for the computer industry. Sun holds a non-exclusive license from Xerox to the Xerox Graphical User Interface, which license also covers Sun's licensees who implement OPEN LOOK GUIs and otherwise comply with Sun's written license agreements.

U.S. Government Rights – Commercial software. Government users are subject to the Sun Microsystems, Inc. standard license agreement and applicable provisions of the FAR and its supplements.

DOCUMENTATION IS PROVIDED "AS IS" AND ALL EXPRESS OR IMPLIED CONDITIONS, REPRESENTATIONS AND WARRANTIES, INCLUDING ANY IMPLIED WARRANTY OF MERCHANTABILITY, FITNESS FOR A PARTICULAR PURPOSE OR NON-INFRINGEMENT, ARE DISCLAIMED, EXCEPT TO THE EXTENT THAT SUCH DISCLAIMERS ARE HELD TO BE LEGALLY INVALID.

---

**Copyright 2005 Sun Microsystems, Inc. 4150 Network Circle, Santa Clara, CA 95054 U.S.A. All rights reserved.**

Ce produit ou document est protégé par un copyright et distribué avec des licences qui en restreignent l'utilisation, la copie, la distribution, et la décompilation. Aucune partie de ce produit ou document ne peut être reproduite sous aucune forme, par quelque moyen que ce soit, sans l'autorisation préalable et écrite de Sun et de ses bailleurs de licence, s'il y en a. Le logiciel détenu par des tiers, et qui comprend la technologie relative aux polices de caractères, est protégé par un copyright et licencié par des fournisseurs de Sun. Des parties de ce produit pourront être dérivées du système Berkeley BSD licenciés par l'Université de Californie. UNIX est une marque déposée aux Etats-Unis et dans d'autres pays et licenciée exclusivement par X/Open Company, Ltd. Sun, Sun Microsystems, le logo Sun, docs.sun.com, AnswerBook, AnswerBook2, et Solaris sont des marques de fabrique ou des marques déposées, de Sun Microsystems, Inc. aux Etats-Unis et dans d'autres pays. Toutes les marques SPARC sont utilisées sous licence et sont des marques de fabrique ou des marques déposées de SPARC International, Inc. aux Etats-Unis et dans d'autres pays. Les produits portant les marques SPARC sont basés sur une architecture développée par Sun Microsystems, Inc. L'interface d'utilisation graphique OPEN LOOK et Sun™ a été développée par Sun Microsystems, Inc. pour ses utilisateurs et licenciés. Sun reconnaît les efforts de pionniers de Xerox pour la recherche et le développement du concept des interfaces d'utilisation visuelle ou graphique pour l'industrie de l'informatique. Sun détient une licence non exclusive de Xerox sur l'interface d'utilisation graphique Xerox, cette licence couvrant également les licenciés de Sun qui mettent en place l'interface d'utilisation graphique OPEN LOOK et qui en outre se conforment aux licences écrites de Sun. CETTE PUBLICATION EST FOURNIE EN L'ETAT ET AUCUNE GARANTIE, EXPRESSE OU IMPLICITE, N'EST ACCORDEE, Y COMPRIS DES GARANTIES CONCERNANT LA VALEUR MARCHANDE, L'APTITUDE DE LA PUBLICATION A REpondre A UNE UTILISATION PARTICULIERE, OU LE FAIT QU'ELLE NE SOIT PAS CONTREFAISANT DE PRODUIT DE TIERS. CE DENI DE GARANTIE NE S'APPLIQUERAIT PAS, DANS LA MESURE OU IL SERAIT TENU JURIDIQUEMENT NUL ET NON AVENU.

# Contents

---

<b>1</b>	<b>Welcome to StarOffice™ 8!</b> .....	<b>5</b>
	Overview of StarOffice software: .....	5
	Key Benefits of StarOffice 8.....	6
	Increased usability .....	6
	Improved Microsoft Office compatibility.....	6
	Increased interoperability with other, popular third party applications.....	6
	Installation and Administration .....	6
	New database engine and front-end tool .....	6
	Seamless integration with native operating system and desktop .....	6
	New XML file format, compatible with previous StarOffice file formats .....	7
	More developer features and tools .....	7
<b>2</b>	<b>Usability Features</b> .....	<b>9</b>
	General Usability features.....	9
	New toolbar concept and design.....	9
	New file format names and extensions.....	10
	Enhanced PDF export.....	11
	Native Desktop Theme Integration (Native Widget Rendering).....	11
	More feature highlights:.....	12
	StarOffice Writer.....	14
	Nested tables.....	14
	New Mail Merge Wizard.....	15
	Format Paintbrush.....	15
	More feature highlights:.....	15
	StarOffice Calc.....	17
	row limit Increased to 65536 rows per sheet.....	17
	Enhanced DataPilot.....	17
	Enhanced Header/Footer Dialog.....	18
	More feature highlights:.....	18
	StarOffice Impress.....	21
	Redesigned Impress for better presentation results.....	21
	All Custom Animations Effects and Slide Transitions from Microsoft PowerPoint available.....	21
	Multi pane view.....	21
	More feature highlights.....	22
	StarOffice Base.....	23
	New database front-end and engine.....	23

More feature highlights.....	23
Forms and Form Controls.....	24
<b>3 Microsoft Office Interoperability.....</b>	<b>27</b>
Importing of Password Protected Microsoft Word and Excel Documents.....	27
Same set of Shapes (AutoShapes) as Microsoft provides.....	28
More feature highlights.....	28
<b>4 Installation and Configuration.....</b>	<b>31</b>
Native installation support.....	31
Multi-language installation.....	31
Central Configuration Tool (Enterprise Edition only).....	31
More feature highlights.....	32
<b>5 Developer-Specific Features.....</b>	<b>35</b>
Support for additional macro languages added by Scripting Framework.....	35
Programmatic Control of Menu and Toolbar Items.....	35
Basic IDE Macro Chooser and Macro Organizer.....	35
More feature highlights.....	36
<b>6 Internationalization Features.....</b>	<b>37</b>
Translator for Simplified to Traditional Chinese and vice versa.....	37
Language packs.....	37
More feature highlights.....	37
<b>7 System Requirements.....</b>	<b>39</b>
Microsoft Windows.....	39
Solaris Operating Environment: SPARC Platform Edition.....	39
Solaris Operating Environment: x86 Platform Edition.....	39
Linux.....	39

## Welcome to StarOffice 8!

---

This document provides an overview of the new and enhanced features and key changes introduced in StarOffice 8 software. When designing this new version, the team paid close attention to feedback from existing StarOffice users around the globe. All users will benefit from the many usability enhancements, increased Microsoft Office interoperability, easy multi-language install and a productivity features such as a redesigned database and presentation module (Impress).

Small business owners and consumers will enjoy the ease of working with powerful productivity tools in a fully integrated environment and the ability to jump start their projects with professionally designed templates. Enterprise and government users will benefit from XForms support, increased document security, the Java™ Desktop System Configuration Manager that allows for easy install and administration, Accessibility (assistive technology) support and increased XML filter functionality that extends XML support for Math and Web (through Writer, the word processor) components. Developers and Independent Software Vendors (ISVs) will benefit from enhancements to the Software Development Kit (SDK), new scripting languages, and a new file format that follows the OASIS standard for open file formats in office productivity. Educators and students will appreciate the multilingual writing aids, improved online help, and advanced graphics capabilities of this award winning office suite.

### Overview Of StarOffice Software:

This section describes the main features of StarOffice:

- A significant cost savings over alternative office suites.
- Comprehensive office productivity – StarOffice 8 software provides word processing, spreadsheet, presentation software, drawing, database and HTML capabilities.
- Multi-platform – StarOffice 8 software runs on Microsoft Windows, Linux, and the Solaris™ Operating System (SPARC® and x86).
- Microsoft Office compatibility – read, edit and save to MS Word, MS Excel and MS PowerPoint file formats.
- Support for third party applications like PDF, FLASH, WordPerfect, Lotus 1-2-3, PDAs and Internet Explorer.
- Easy to learn and use – familiar user interface, industry standard menus, icons, dialog boxes, layout.
- Open – source code can be found at [www.openoffice.org](http://www.openoffice.org) and is available for download as source or binaries.
- Accessibility support – through third party assistive technology tools, StarOffice (along with online help and user documentation) can be used by people requiring large fonts, screen readers, alternative input devices etc.
- Complete support of open, XML file formats - StarOffice default file format is XML and full details of the file format can be found at [www.openoffice.org](http://www.openoffice.org).

# Key Benefits Of StarOffice 8

## Increased Usability

We have made StarOffice 8 even easier to use and learn for users of other office suites. Major enhancements have been made to toolbars, menus, presentation software, user interface, data pilot (pivot tables) and headers/footers. There is also a format paintbrush tool for easy manipulation of styles and formatting and a mail merge wizard to easily create and send letters. Other areas of usability that have been improved include bullets, text and table selection, spellcheck, word count, spreadsheet cell formatting, email attachments and online Help.

## Improved Microsoft Office Compatibility

StarOffice provides the best Microsoft Office import and export filters available today to facilitate the exchange of documents (word processing, spreadsheet, presentations) with Microsoft Office users. StarOffice 8 significantly improves the compatibility between StarOffice files and Microsoft Office files and MS Office users will find it even easier to learn and use StarOffice. StarOffice 8 software supports MS PowerPoint AutoShapes, password-protected MS Word and MS Excel files, WordML and spreadsheetML files, provides 64,000 rows in Calc to import large MS Excel spreadsheets; enables better import and export of tables, headers and footers, formatting, complex Excel formulas, and text frames.

## Increased Interoperability With Other, Popular Third Party Applications

StarOffice 8 also features improved PDF export (supporting hyperlinks and table of contents), import of WordPerfect documents, XML filter functionality for formula and HTML and Lotus 1-2-3 files. StarOffice 8 introduces XForms support, enabling higher levels of interoperability with other vendors who also support this standard

## Installation And Administration

StarOffice 8 includes the Java Desktop System Configuration Manager. This central configuration tool helps manage StarOffice users user settings, such as profiles, policies, security and authentication, access controls.

Note that the Configuration Manager is available only with the StarOffice 8 Beta Enterprise Edition which is available through Sun sales and partners. For more information please visit this site: [www.sun.com/sales](http://www.sun.com/sales)

Installation is also easier with the multi-language installation feature, which allows users to select a language to install without having to re-install specific language packs and support for the native installation types provided by the user's operating system.

## New Database Engine And Front-end Tool

StarOffice 8 has totally re-designed its database front-end tool (StarOffice Base) which makes it much easier to create forms, queries and reports. StarOffice Base supports major database types and connections like mySQL, ADO, Oracle, ODBD, JDBC and works similarly to those databases. StarOffice 8 also introduces the HSQLDB database engine in addition to Adabas D.

## Seamless Integration With Native Operating System And Desktop

StarOffice 8 seamlessly integrates itself into the desktop of the native operating system – whether it is the Solaris Operating System, Linux, or Microsoft Windows. StarOffice uses the objects, themes, settings etc. of the user's desktop and behaves like a native application.

## New XML File Format, Compatible With Previous StarOffice File Formats

StarOffice 8 adopts the OASIS (Organization for the Advancement of Structured information Standards, a standards setting body) OpenDocument format. This further increases the interoperability of StarOffice as files can be exchanged with any application that also uses the OASIS XML file format. The new file formats will have .odx extensions where 'x' is the application (example: ods for the Calc spreadsheet). Note that StarOffice 8 is backward compatible, allowing users to load and edit documents created in StarOffice 7 or earlier versions.

## More Developer Features And Tools

StarOffice can be customized and extended with a Software Development Kit (SDK). The SDK provides API concepts with descriptions, UNO component model and API usage within different application areas, and numerous examples using Java™, C++, Basic and OLE.

Developers who want to write additional components, modify the StarOffice user interface, or otherwise extend the StarOffice software functionality can download the StarOffice SDK or the Office Development Kit (ODK) at [http://udk.openoffice.org/udk\\_package.html](http://udk.openoffice.org/udk_package.html) . The ODK source is available at OpenOffice.org ([www.openoffice.org](http://www.openoffice.org)).





## Usability Features

---

The usability enhancements in StarOffice 8 make StarOffice much easier to learn and use. The important areas that have received significant usability enhancements are:

- New toolbars
- Re-designed menus
- Formatting and styles
- Mail merges
- Database
- Tables
- DataPilot (similar to MS Excel Pivot Tables)
- Forms including XForms support and form controls
- Headers and footers
- Look and feel of Impress
- Multimedia support
- Multi-pane views in Impress
- Seamless integration into native desktop and operating systems
- Office-related terminology
- Online Help

General usability features that affect all applications will be described followed by usability features for each, specific application (Writer, Calc, Impress, Base).

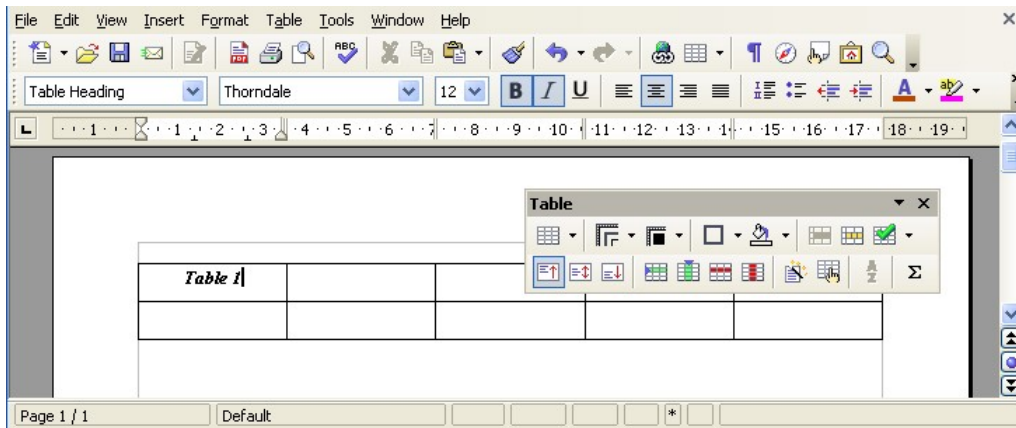
### General Usability Features

#### New Toolbar Concept And Design

StarOffice toolbars have been completely revised. They retain their context-sensitive behavior, but initially display only carefully selected default tools.

Toolbars will appear as appropriate to the document or work at hand. Use the View – Toolbars menu to display additional toolbars.

You can also click the arrow icon located at the end of each toolbar to open a menu which provides the following options: Visible Buttons, Customize Toolbar, Dock Toolbar, Lock Toolbar Position, Dock All Toolbars.



## New File Format Names And Extensions

StarOffice 8 and OpenOffice.org 2.0 use the new OASIS (Organization for the Advancement of Structured Information Standards) OpenDocument XML (eXtensible Markup Language) file format as a default. Support of this format has been announced by KOffice and a number of other products.

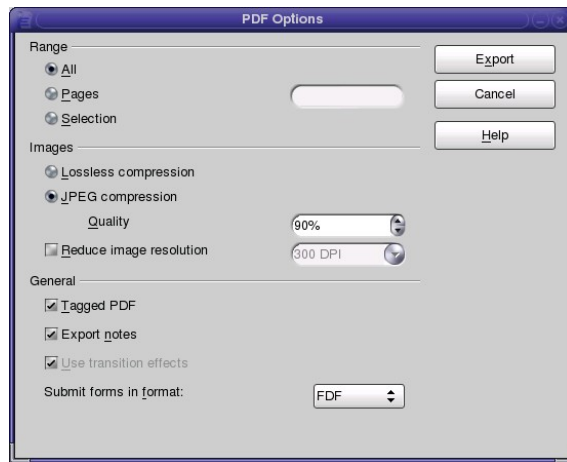
- **Writer**
  - OpenDocument Text [.odt]
  - OpenDocument Text Template [.ott]
  - OpenDocument Master Document [.odm]
- **Calc**
  - OpenDocument Spreadsheet [.ods]
  - OpenDocument Spreadsheet Template [.ots]
- **Draw**
  - OpenDocument Drawing [.odg]
  - OpenDocument Drawing Template [.otg]
- **Impress**
  - OpenDocument Presentation [.odp]
  - OpenDocument Presentation Template [.otp]
- **Math**
  - OpenDocument Formula [.odf]
- **HTML Template**
  - HTML Document Template [.oth]

## Enhanced PDF Export

The PDF export functionality offers improved graphics output. The user has now the ability to use lossless compression or to set the quality level for exported images.

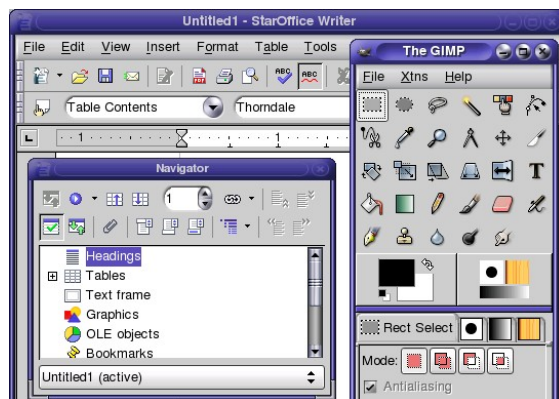
The PDF export also supports:

- Hyperlinks
- Table of contents
- Document outline (for easy document navigation)
- Document notes
- PDF controls
- Tagged PDF (for Writer only)



## Native Desktop Theme Integration (Native Widget Rendering)

To enhance integration of StarOffice with the underlying desktop, all user interface elements (such as buttons and scrollbars) have the same look as those used in other "native" applications for that desktop. StarOffice dynamically updates its appearance when a desktop theme or color is changed.

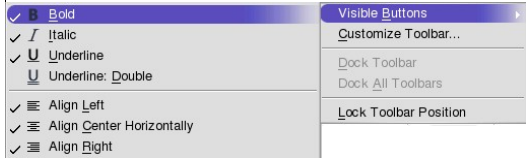


Native system theme integration will be available for Gnome (version 2.4 or higher) and Microsoft Windows (XP and newer) desktop environments. On Windows XP the "Windows XP Style" must be chosen under Settings->Control Panel->Display->Appearance to achieve the correct look.

Systems that do not support themes (e.g., Windows 98/ME/2000, CDE) do not display the improvements noted above.

## More Feature Highlights:

Feature	Benefit	How to Access
XForms Support	<p>StarOffice is able to create and edit XForms compatible forms. XForms is an international W3C standard for the next generation of forms for the Web</p> <p>XForms can do everything that HTML Forms can, and offer the following advantages:</p> <ul style="list-style-type: none"> <li>• Richer user interface to meet the needs of business, consumer and device control applications</li> <li>• Decoupled data, logic and presentation</li> <li>• Improved internationalization</li> <li>• Support for structured form data</li> <li>• Advanced forms logic</li> <li>• Multiple forms per page, and pages per form</li> <li>• Suspend and Resume support</li> <li>• Seamless integration with other XML tag sets, etc.</li> </ul> <p>More information about XForms can be found on w3.org: <a href="http://www.w3.org/MarkUp/Forms/">http://www.w3.org/MarkUp/Forms/</a></p>	Choose File – New – XML Form document
Increased document security through digital signatures	Digital signatures offer secure protection of document content. They offer reliable authentication of the author of a document/macros as well as assurance that a document has not been altered since it was digitally signed. Digital signatures are also used to make security decisions, such as whether or not to run a macro.	<p>Choose File – Digital Signatures to open the dialog.</p> <p>When a signed document is loaded, StarOffice shows a little red seal icon in the status bar at the bottom of the document window. Right-click the icon on the status bar to open the context menu, where you can also find the menu entry Digital Signatures. This can be done for the document content and for the macros independently</p>
New file thumbnails for preview in file explorer	The file system explorer now displays a thumbnail preview of a StarOffice file.	The standard file system explorer on Gnome (Nautilus) and Windows (Explorer) support a thumbnail view mode in which a small preview of the respective file system object will be displayed if available.
Drag and drop selections to create styles	You can now drag and drop a text selection into the Styles and Formatting window to create a new or user-defined paragraph style or character style (soft formatting).	Open the Stylists and drag the selected into the 'Styles and Formatting' window.
Improved AutoRecovery of documents	The Error Reporting Tool and the document recovery features are now combined into one process. If StarOffice crashes, the documents will be saved and a message informs the user that the recovery is taking place. After that an error report can be sent.	StarOffice will start automatically after a crash

Feature	Benefit	How to Access
State name of office module in window title	Instead of showing the file name or the title (if available) and the software name on the window title bar, now the file name plus the office component name (e.g. Writer, Calc, Impress, etc.) will be displayed.	This text is on the title bar at top of the document window, above the menu bar.
Modularized Options	The names of the various options pages now have names corresponding to the names of the StarOffice modules, such as Writer, Calc, etc. so users can more easily find the section they need.  The Options found under Tools now also feature context sensitive sections. The user will see only those sections those that make sense in the given context of an active module.	Choose Tools – Options
Added Keyboard Support for Assigning Styles	You can now faster assign styles (e.g. paragraph, page, frame, character styles) using only the keyboard. This is especially important for users who can only work with a keyboard. A user can also quickly create easy to use shortcuts.	Choose Tools – Customize – Keyboard  A set of predefined shortcuts for paragraph styles is provided for StarOffice Writer.
Easy to customize menus and toolbars	Menus and toolbars can be easily customized. In addition to the new tab page in the Customize dialog, toolbars are now also customizable using drag & drop. Moving, removing and duplicating a tool (icon) is fast and easy.	Choose Tools – Customize – Menus or Toolbars
		
More conformance with industry-standard terminology	Some terms have been changed to be conform to industry-standard terminology. This will help to make these features more familiar to users. Some examples are: <ul style="list-style-type: none"> <li>• “AutoPilot” has been changed to “Wizard”</li> <li>• “Stylist” has been changed to “Styles and Formatting”</li> <li>• “Help Tips” has been changed to “What’s This?”</li> </ul>	Choose, for example, File – Wizards, Format – Styles and Formatting, Help – What’s This?
Improved access to recently-used file list	The File menu gives access to recently used StarOffice documents. This list is extended to 10 items. It is also a sub menu in order to improve the usability of the File menu.	Choose File – Recent Documents
Search within Help pages enabled	Search functionality within pages in the StarOffice Help has been implemented.	Open StarOffice Help from the main menu bar
More “How to” information in Help	Straightforward how to information to perform tasks in application. Such as creating table of contents, turning document into a template, adding page numbers in spreadsheet, etc.	Choose Help – StarOffice Help

Feature	Benefit	How to Access
Mozilla™/ Netscape™ Plug-in	Viewing of StarOffice and MS Office documents in Mozilla/Netscape enabled. The plug-in needs a version of Mozilla 1.x, Netscape 6.x, or Netscape 7.x installed on your system.	Choose Tools – Options – Internet – Mozilla Plug-in
Windows Explorer Infotips for StarOffice document	Infotips are now available for StarOffice documents viewed in the Microsoft Windows Explorer. Infotip handler are small ToolTip windows that show information about a file.	The Windows Explorer shows such infotips if you point the mouse over a file for a few seconds.
Easier configuration for making e-mail attachments	Open your e-mail composer window with the active document directly attached. The task of configuring the email client has been simplified.	Choose Tools – Options – Internet – Email
Start module is now optional	The Start Module – Module that does not show a specific type of document – becomes an optional module. A configuration setting is used to disable the Start Module if required for a site installation.	Choose Tools – Customize (In the Start module)

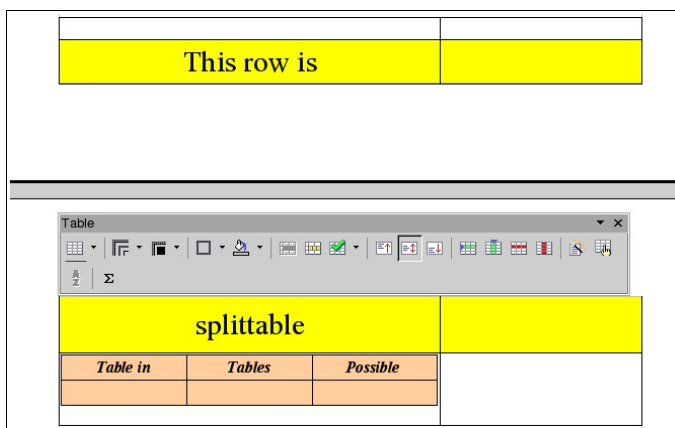
## StarOffice Writer

StarOffice Writer provides features for both the novice and the advanced user. By using one of the many included templates, beginners can quickly create anything from a professional letter to a gift certificate, resume or business invoice. Power users will find much to like as well, from the Stylist (now called Format Styles) to the new mail merge wizard, which will enable easy creation of mail merges.

### Nested Tables

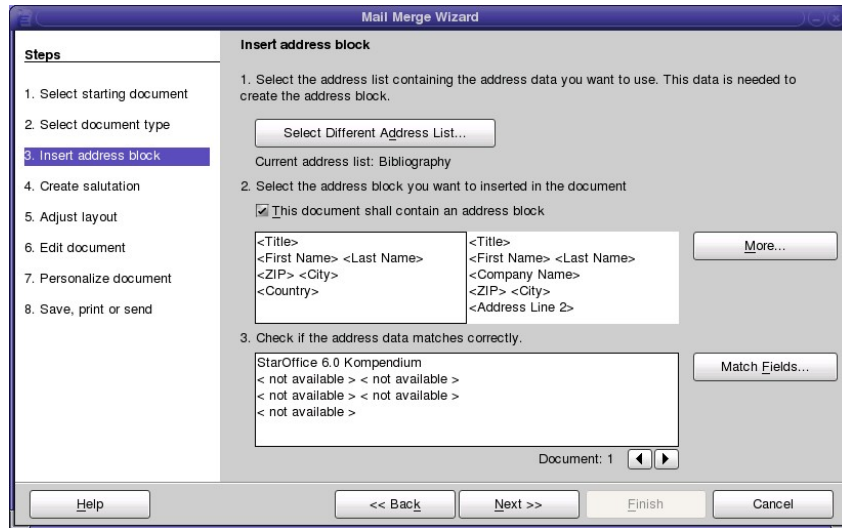
StarOffice 8 offers more flexibility in table creations. You can insert a table into a table cell. (This feature also improves the import/export of Microsoft Word documents, which can contain nested tables.)

How to access: place your cursor in the desired cell of a table. Choose Insert – Table (or Table – Insert – Table).



## New Mail Merge Wizard

A new mail merge wizard makes sending form letters much easier than in previous versions of StarOffice, whether you print them or send them out via e-mail.



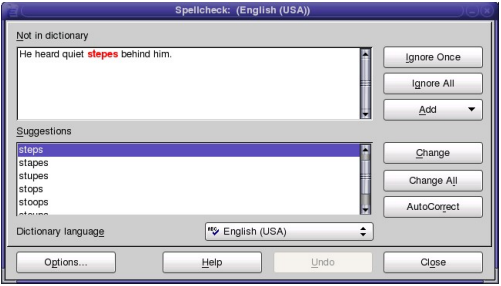
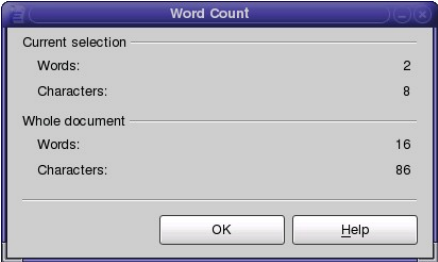
## Format Paintbrush

StarOffice has a new tool to ease copy and paste styles (formatting). It is called the Format Paintbrush and directly transfers all formatting from text and objects to new targets. Choose the Format Paintbrush icon in the main toolbar.



## More Feature Highlights:

Feature	Benefit	How to Access
New Table menu	A Table entry in the menu bar allows easier table handling.	Choose Tables in menu bar
Multipage cells in tables	Tables allow a page break within cell/row.	Choose Tables – Table Properties – Text Flow – Break
WordPerfect document import	You can now open WordPerfect 4/5/6/7/8/9/10/11 documents in StarOffice.	File Open will automatically convert a WordPerfect file upon opening the file.
XML input/output filters	The XML Filter functionality is now also available for HTML and formula documents. The functionality was introduced for Writer, Calc and Impress with StarOffice 7 and allows users to use the XSLT Template technology to build import/export filters. Moreover, all XML Filters now support both, the StarOffice 7 and and the new OASIS OpenDocument formats.	Choose Tools – XML Filter Settings.

Feature	Benefit	How to Access
Improved spellcheck dialog	<p>The new non-modal spelling dialog shows a spelled word in the context of a complete sentence. This context helps the user to decide whether a highlighted word is incorrect or only unknown.</p> <p>Furthermore the user can use the new undo functionality to undo changes within the spelling dialog without needing to return to the document.</p> 	Choose Tools – Spellcheck
Enhanced HTML export to produce "XHTML 1.0 Strict"	Exporting HTML now produces well-formed, valid 'XHTML 1.0 Strict' output.	Save in HTML
Word count in selections	<p>StarOffice 8 can now provide a word count for a highlighted selection within a document.</p> 	Select the part of text in which you want to count the words. On the Tools menu, choose Word Count.
New vertical text direction in Tables	A new direction attribute for table cells has been introduced to allow the user to set the text direction for table cells so it can be different from the direction of the table environment.	Select one or more cells in a table, then from the context menu choose Table – Text Flow – Text direction
Edit height of row in table with mouse	Now it's also possible to change horizontal lines using the mouse to adjust row height.	Move mouse over a horizontal line in a table and drag and drop the line.
Enhanced selection of text and tables	<p>Select whole sentences or paragraphs quickly and easily with left mouse-clicks. (Multi-selection using the CTRL key is also possible for this type of selection.)</p> <p>Also the selection in tables has improved. You can now select a whole table row or column by just clicking left of the table row or above the column.</p>	Triple-click the left mouse button anywhere in a sentence to select the whole sentence; quadruple-click to select the paragraph. (Double-clicking on a word still selects the word as in StarOffice 7)
Insert bullets and numbering in several table cells with one mouse-click	Easily convert the content of several cells to bulleted or numbered lists with one mouse-click.	Select one or more cells in a table. Click the Bullets On/Off icon or the Numbering On/Off icon from the Formatting toolbar.



Feature	Benefit	How to Access
Shortcut for Edit - Paste Special	Perform Edit – Paste Special faster by using the keyboard rather than the menu.	Shift+Ctrl+V
Hidden Text Attribute	Easily hide parts of your text.	Choose Format – Character – Font Effects – Hidden.
Ctrl + Up/Down accelerators added to move paragraphs	Now Ctrl + Key Up/Down move a paragraph up or down, in addition to Ctrl+Alt+Key Up/Down.	Use Ctrl+Alt+Key Up/Down move a paragraph
Automatically resize text frames width	Text frames can automatically resize as you type, a feature unique to StarOffice.	Choose Insert – Frame – Width Automatic
Better object positioning with 'Follow text flow' option	The usability for positioning objects in text has been enhanced. The new option 'Follow text flow' has been introduced for text frames Specification of new option 'Follow text flow' for Writer fly frames that are anchored to paragraph or to character to control, if they have to follow the text flow or can leave their layout environment. If option 'Follow text flow' is <b>activated</b> , the Writer fly frame has to follow the text flow. If necessary the fly frame is positioned on the next page. If option 'Follow text flow' is <b>deactivated</b> the Writer fly frame doesn't follow the text flow and can leave their layout environment.	After you have inserted a frame (Insert – Frame), choose Format – Frame – Type, see check box at the bottom.
Default tab stop position changed in tables of illustrations, tables of figures	The default tab stop positions in tables of illustrations, tables or figures, etc. have been changed. The tab stop is now aligned right and has a dot as fill character. This feature makes the behavior the same as in tables of contents (TOC).	Chose Insert – Index and Tables
Bibliography database menus now customizable	You can now customize the bibliography database menus and shortcut keys via the Tools menu.	Chose Tools – Bibliography Database – Tools – Customize

## StarOffice Calc

The StarOffice Calc spreadsheet allows you to calculate, analyze, share and visually communicate your data quickly and easily. You'll find features like the Scenario Manager (for what if analysis), flexible cell formatting, natural language formulas (use words like “capital + interest”), Data Pilot (track and summarize data in a cross-tabulated table) and built in templates (e.g. automatic currency exchange lookup). StarOffice 8 adds enhanced sorting options, more robust data import capability, easier printing, longer string length capability, more powerful matrix arrays and many new functions to improve MS Excel compatibility.

### Row Limit Increased To 65536 Rows Per Sheet

The maximum number of rows in a StarOffice Calc spreadsheet has been increased to 65536 – the same as in Microsoft Excel spreadsheets. This number will be further increased in future releases.

### Enhanced DataPilot

(DataPilot corresponds to Pivot Tables in Microsoft Excel). The DataPilot has been extended with the following functions:

- DataPilot tables can now include page fields.
- Result values can be shown in relation to results from other items.
- Field items can be sorted by their names or result values.
- Items can be hidden manually, or automatically using their result values.
- Tabular or outline layout mode can be selected for each field.
- Items can be grouped together manually, by value ranges, or by date parts.
- The “Show details” function can add fields to a DataPilot table (“drill down”).

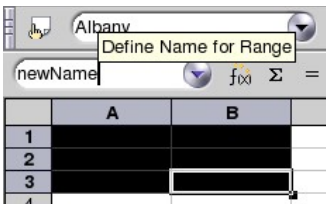
How to access: Choose Data – DataPilot. The “Layout” section of the DataPilot dialog has a new orientation area “Page” in addition to the existing “Column”, “Row” and “Data” areas. A “More>>” button has been added to the Data Value dialog allowing you to select the type of display for each field. An "Options" button has been added to the column/row/page field dialog to select the new options. To group items, select the item names in the output table and choose Data – Outline – Group. For "Show details", double click on an item name, or choose Data – Outline – Hide Details or Show Details.

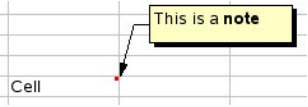
## Enhanced Header/Footer Dialog

You can now choose from a predefined set of headers and footers. This feature reflects how Microsoft Excel handles headers and footers.

How to access: Choose Edit – Headers & Footers

## More Feature Highlights:

Feature	Benefit	How to Access
Enhanced number recognition	Number input into a cell no longer overwrites user-defined number formats.  Further more the number formatter now also recognizes the following date/time input (ISO 8601 conform): yyyy-mm-dd, yyyy-mm-dd, HH:MM, yyyy-mm-dd, HH:MM:SS, yyyy-mm-ddTHH:MM, yyyy-mm-ddTHH:MM:SS	Not Applicable – happens automatically
Create named cell ranges by typing into the Name box	The Name box in Calc can be used to define new cell ranges by simply typing a name. The immediate display of a tool tip tells the user that he is about to create a new named cell range.  	Selects a cell area, click into the Name box of the Formula bar and enter a new name.
Scenario Protection	Users can now protect modification and deletion of existing scenarios. Only new scenarios can be added. Scenarios allow you to create a set of grouped data which may change depending on what parameter or scenario you choose from the drop-down list.	Chose Tools – Scenarios – Prevent changes
New menu entry "Sheet From File" in Insert menu	You can easily insert a sheet from another file into the file you're currently editing via menu entry in the Insert menu.	From the 'Insert' menu, choose 'Sheet From File'.

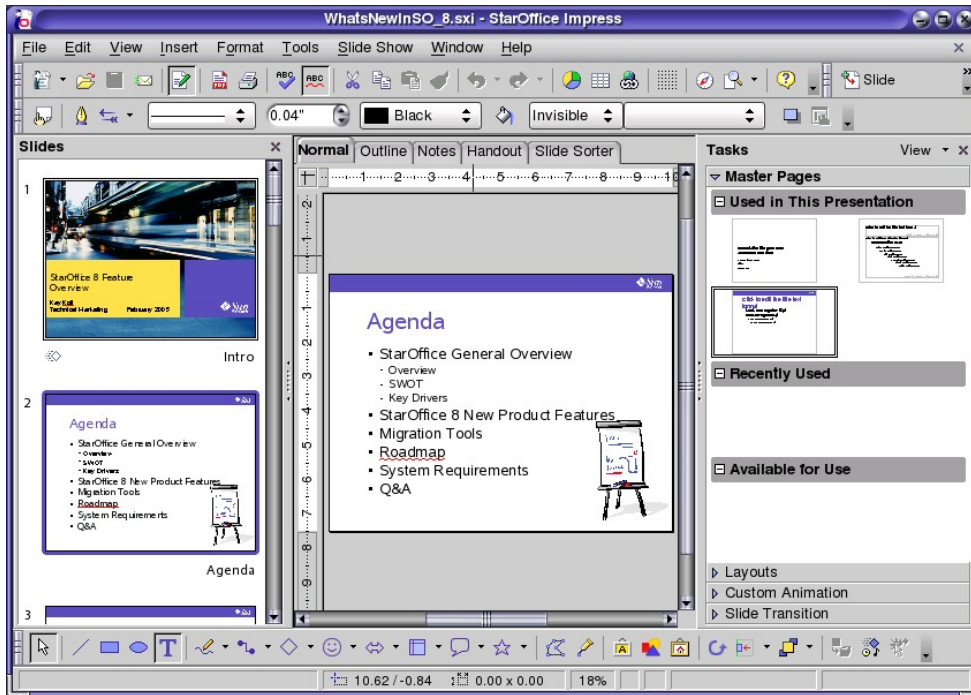
Feature	Benefit	How to Access
Diagonal lines for inside cells	More flexibility in designing spreadsheets: Diagonal lines can now be used within cells. This is an extension of the outer border lines attribute of a cell.	Choose Format – Cells – Borders – User-defined
Select/Deselect all sheets	When multiple sheets in a spreadsheet are selected, it is now possible to deselect them using the keyboard.	To select multiple sheets with keyboard, use the shortcuts CTRL+SHIFT+PAGE(UP/DOWN). The same shortcuts will deselect all sheets, if they are all selected.
Conditional Array Calculation	Array formulas, such as <code>{=IF(A1:A3&gt;0;"good";"bad")}</code> , can now be used. A conditional array calculation is an array or matrix formula that includes an IF() or CHOOSE() function.	Type in an array formula with a conditional calculation like <code>{=IF(A1:A3&gt;0;"yes";"no")}</code> for the >0 test
Alignment of text larger than a cell	The horizontal alignment of a cell is now honored even if the text is larger than the cell width. Left-aligned cells are expanded to the right, right-aligned cells are expanded to the left, centered cells are expanded into both directions (previously, all cells were expanded to the right).	Type in text in a cell, which is larger than the cell width. Change the text alignment ("Wrap text automatically" should be disabled)
Format Menu is easier to use	The set of menu commands on the Format menu in Calc remains the same for all objects to be edited. The structure and terminology is consistent with the Writer module and matches competitive applications.	Chose Format Menu
Cell formatting and deletion of cells leave filtered-out cells untouched	When cells are filtered the following actions do not affect rows that are not visible due to filters: <ul style="list-style-type: none"> <li>• Deleting cell contents</li> <li>• Deleting rows (deleting single cells is disabled)</li> <li>• Changing cell formats including styles.</li> </ul>	Choose Data – Filter – AutoFilter, Standard Filter or Advanced Filter
Cell notes now more intuitive	Positioning and resizing of cell notes lets you have more control over the layout in your spreadsheets. Notes and their text contents can be formatted. 	Choose Insert – Note, click the note to reposition, resize or reformat.
Lotus 1-2-3 import supporting version 9.7	The Lotus 1-2-3 import now also loads files of Lotus versions up to v9.7, the file type list box lists the .123 file name extension additionally to the already known .wk1 and .wks extensions. Not the full set of features get imported. Except of the imported features : <ul style="list-style-type: none"> <li>• Import of Integers and floating point numbers</li> <li>• Numbers that are multiples of 10</li> <li>• Long Numbers stored in IEEE Format</li> <li>• Summation, Average functions</li> <li>• Various functions like abs or sqrt</li> <li>• Import of notes</li> <li>• Text attributes like bold, italics or underlined</li> <li>• Horizontal and vertical text alignment</li> </ul>	Load a Lotus 1-2-3 9.7 spreadsheet

# StarOffice Impress

StarOffice Impress module is a full-featured presentation tool, complete with many preformatted templates and a wealth of image and text effects. But what really sets it apart is its remarkable animation and 3-D tools. So we're going to create a little two-slide presentation utilizing these and other Impress features.

## Redesigned Impress For Better Presentation Results

Enjoy increased usability, more comfortable look and feel, and much more, with the new presentation engine. In addition, the multi-pane view lets you keep a better overview while you design your presentation. Compatibility with Microsoft PowerPoint has also improved.



How to access: Choose File – New – Presentation

## All Custom Animations Effects And Slide Transitions From Microsoft PowerPoint Available

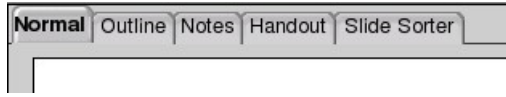
The set of custom animation effects and the slide transitions are synchronized with Microsoft PowerPoint. StarOffice 8 provides the same set with very similar names. PowerPoint users don't need any retraining.

How to access: Slide Show – Custom Animations

## Multi Pane View

The new multi pane GUI of Impress with two more panes to the main working window makes creating and maintaining a slide show easier, faster, and more intuitive. A slide sorter on the left gives an overview of the presentation. A task pane on the right provides frequently used tools.

## More Feature Highlights

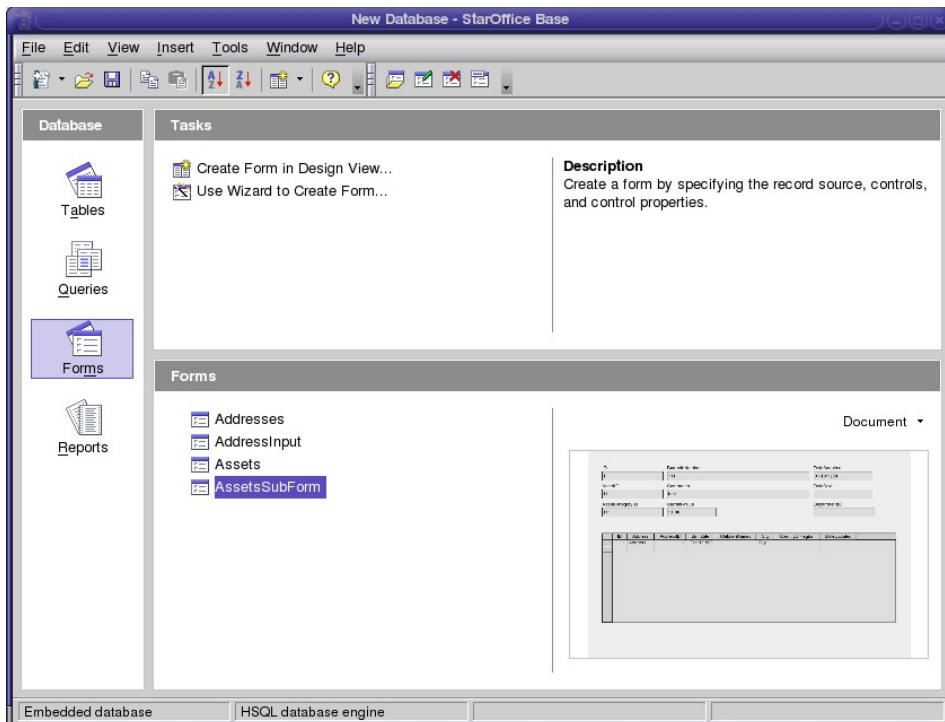
Feature	Benefit	How to Access
Improved Modi Selection	<p>In the center task panel the following modes can be selected from a tab page control at the top of the center pane:</p> <ul style="list-style-type: none"> <li>• The 'Normal' view for editing a single slide. It is shown by default.</li> <li>• The 'Outline' view which gives a textual overview of the entire document.</li> <li>• The 'Notes' view where notes to single slides can be written.</li> <li>• The 'Handout' view for editing the layout of the handout pages.</li> <li>• The 'Slide Sorter'</li> </ul> 	Select tab page control in center pane.
Improved header and footer support	New placeholders for header and footer are now automatically created on master pages and the user can customize them by using a simple dialog that is available from the view menu. The placeholders can be positioned, sized and formatted on the master pages.	Choose Insert – Date/Time or Insert – Page number
Improved multimedia support and integrated Media Player	<p>Impress (and all other modules including the Gallery) now support many more multi media formats. The current list of available media filters is as follows: AIF Audio, AU Audio, AVI, CD Audio, MIDI Audio, MPEG Audio, MPEG Video, Quicktime Video, Vivo Video, WAVE Audio</p> <p>An inserted media object can be controlled with a new media object bar which offers “Play”, “Pause”, “Stop”, “Repeat”, “Mute” and “View” buttons.</p> <p>Another option to preview multimedia files is to use the integrated MediaPlayer (Tools – Media Player), which can be selected from the Tools menu.</p>	Choose Insert – Movie and Sound
Improved open document behavior	Impress documents open on the first page or slide, regardless of the last editing position when the document was saved the last time.	Open presentation.

# StarOffice Base

## New Database Front-end And Engine

StarOffice has a completely redesigned database front-end tool. StarOffice Base provides wizards to help you create forms, reports, queries, tables, views and relations. The forms, reports and queries are stored in a single file format so you can work with your database in the same way you would do in other popular databases.

StarOffice uses the open source, Java driven, HSQLDB database engine.



How to access: Open StarOffice Base in the Start menu. You can also start the database by double-clicking a StarOffice Base file, or choosing File – Open or File – New in any StarOffice application.

## More Feature Highlights

Feature	Benefit	How to Access
Table Wizard	The new database table wizard helps create tables for your database. More than 30 predefined table schema ensure that you don't forget any important aspects.	Choose File – New database
Subforms in Form Wizard	The Form Wizard now also provides the functionality to create subforms.	Choose File – New database – Forms – Use Wizard to create form...
Improved access to ADO (Access/SQL Server) data sources	The database setup displays a list of all existing ADO database connection. The user simply choose one of these connections to setup the database connection. ADO is not available on Solaris and Linux.	Choose New database, select Connecting to an existing database and choose database type "ADO".

<b>Feature</b>	<b>Benefit</b>	<b>How to Access</b>
Access to various Address Books	StarOffice offers access to different external address books like Mozilla/Netscape, Outlook Express, Evolution, LDAP with read and write access.	If no Address Book is registered, choose File – Wizard – Address Data Source
LDAP Authentication has been enhanced	You can now connect StarOffice to a LDAP server using secure sockets layer, thereby providing higher security when accessing data in StarOffice files.	See User name, Password required and Use secure connection in LDAP configuration page of the Data Source Administration dialog.
SQL Functions added	An extended set of SQL commands (all numeric, string and datetime function specified in the SQL92 standard ) for dBASE, flat file and spreadsheet databases are now available.	Select table in StarOffice Base, choose Tools – SQL...
Improved usability in the data source view and forms	Creating a new sort or filter criteria within the data source browser or a database form, the dialogs does not show an automatically created criteria accordantly the current selection.	Choose View – Data Sources – Autofilter/Default Filter

## Forms And Form Controls

Scrollbar Form Control	The new scrollbar form control can be embedded in all StarOffice documents	Choose View – Toolbars – Form Design – Scrollbar
Spin Button Form Control	The new scrollbar form control can be embedded in all StarOffice documents	Choose View – Toolbars – Form Design – Spin Button
Improved table control capabilities	Text columns in table controls can now display and edit multi-line text.	Choose View – Toolbar – Controls, Insert a table control, check “Multiline input” option in the properties dialog for the text box.
Property Browser Enhancements	The property browser for modifying various aspects of form and dialog controls, as well as logical forms is now easier to use.	Choose View – Toolbars – Form Design – Control Properties
Properties of Navigation bar form control improved	The Navigation Bar of the database forms is now a separate control. It provides a richer set or properties and is more flexible as the integrated version in StarOffice 7	Open Controls Toolbar, choose Navigation Bar control and add it to the document.
Data Source Browser in embedded forms	The data source browser in a embedded form document (F4) displays exactly the database which the form belongs to, and not the registered databases anymore.	Choose File – Open – Database File – Forms
Form design opens with changed grid size and vertical ruler	When opening a new form, the vertical ruler is now visible and the grid size is set to 5 to allow a better adjustment of a control.	Choose File – Open – Database File – Forms
Property "Scale"	The property "Scale", which was previously available for image controls in the Basic dialog editor only, is now also available for image controls and image buttons in forms.	Choose File – Open – Database File – Forms





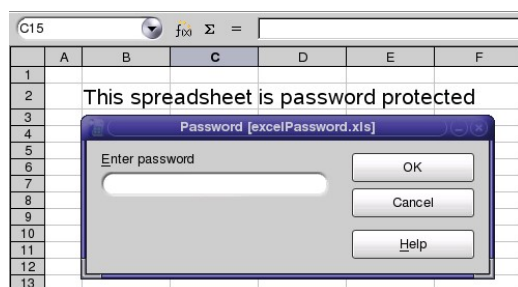
## Microsoft Office Interoperability

StarOffice 8 continues to improve on Microsoft Office import and export filters available today. StarOffice 8 has improved import and export of the following Microsoft Office objects:

- Password-protected MS Word and MS Excel files
- MS PowerPoint AutoShapes
- Headers and Footers
- Tables, paragraphs and table spaces in MS Word documents
- Large MS Excel spreadsheets
- Formulas in MS Excel
- Floating objects, page breaks and column breaks in MS Word documents
- MS Office files in XML formats

### Importing Of Password Protected Microsoft Word And Excel Documents

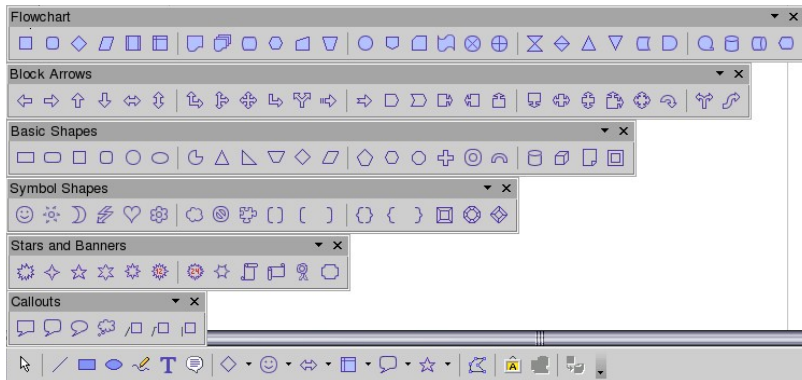
Password-protected Microsoft Word and Microsoft Excel documents can be opened using the Microsoft Office 97/2000 compatible document encryption (the original password is required).



How to access: Start to open a password-protected document and the Enter Password dialog will appear.

# Same Set Of Shapes (AutoShapes) As Microsoft Provides

The Drawing Toolbar has been enhanced to include a rich set of new, commonly used drawing Shapes: Basic Shapes, Block Arrows, Symbol Shapes, Flowchart, and Stars and Banners. All shapes can be imported/exported to commonly known formats without data loss.



How to access: The drawing toolbar appears below the document. If it is not visible, choose View – Toolbars – Drawing

## More Feature Highlights

Feature	Benefit	How to Access
Improved import of headers & footers Module: Writer	Tables and graphics in headers and footers are now imported more accurately.	Import a Microsoft Word document with a tables and graphics in header or footer.
Adjust positioning of floating screen object Module: Writer	The positioning of floating screen objects was adjusted so Writer can more accurately import Word documents. The adjustment affects the determination of the paragraph top for the positioning of floating screen objects.	Choose Tools – Options – StarOffice Writer – Compatibility – “Consider wrapping style when positioning objects”
Automatic Page And Column Breaks in tables Module: Writer	Microsoft Word documents with tables can more accurately be imported/exported to and from StarOffice Writer.	Open the Table dialog, choose Text Flow tab page.
Import and export of spin buttons and scrollbars Module: Writer & Calc	Now it's possible to import Microsoft Office 95 and Office 97 spin buttons and scrollbars. All spin buttons and scrollbars are exported as Microsoft Office 95 controls.	Import a Microsoft Office 95/97 document with a spin button control
Import/Export of Microsoft Spreadsheetml and WordML documents	An import and export filter for the Microsoft's XML formats SpreadsheetML and WordML is available	Load and Save documents in the WordML or SpreadsheetML format.
Vertical alignment 'Line of text' Module: Writer	Vertical alignment at line has been introduced for text frames which are now anchored to a character.	After you have inserted a frame (Insert – Frame) and anchored it to a character, choose Format – Frame – Type, under 'Position' the selection list for the vertical alignment includes 'Line of text'.

<b>Feature</b>	<b>Benefit</b>	<b>How to Access</b>
Table borders styles can be merged Module: Writer	This feature merges two different border styles of adjacent cells in a Writer table into one border style.	Choose Format – Table – Borders. There is a checkbox 'Merge adjacent line styles' on the property area.
Font-independent line spacing Module: Impress	Line spacing of StarOffice Impress no longer depends on the font	Microsoft PowerPoint presentation get imported more accurately
Enhanced page scaling for printing Module: Calc	Specify the number of horizontal and vertical pages for printing just like in Microsoft Excel.	Choose Format – Page – Sheet – Scaling mode: "Fit print range(s) to width/height" and select the width and height in pages.
Cell attributes "Shrink to fit cell size" and horizontal alignment "Filled" Module: Calc	Cell content is shown shrunk or repeated to the cell size.	Choose Format – Cells – Alignment
Improved Excel export formula compiler Module: Calc	The formula compiler in the Excel export filter has been re-implemented to improve the export capabilities.	Load and save Microsoft Excel spreadsheets with complex formulas.
Paragraph Spacing to Table Borders Module: Writer	Paragraph and table spacing are now added instead of only considering the distance to the border set in the table's properties. This new feature improves the Microsoft interoperability and is also set as default for newly created Writer documents.	Load a Microsoft Word document with a text table
Improved repeat table heading Module: Writer	For better compatibility more than one row could be repeated in table cells.	Choose Table – Table properties – Text flow – Repeat heading



## Installation and Configuration

---

StarOffice 8 introduces a host of new features to ease installation and user administration. StarOffice now follows the installation procedures of the operating system. StarOffice user settings are now configured using a tool originally introduced in the Java Desktop System (JDS). The Java Desktop System Configuration Manager helps to manage StarOffice user configuration data, such as profiles and security settings. In addition, multi-language installation is significantly easier with StarOffice 8 as the users can decide what language(s) they want to use at install time, rather than re-installing a separate language pack after installation of the core StarOffice product.

### Native Installation Support

The StarOffice setup and installation is now based on the most common installation type provided on the respective operating systems. These are 'pkg' packages on Solaris, 'rpm' packages on Linux, and 'MSI' packages on Windows.

How to access: Start the setup or use the pkgadd or rpm installers for a silent installation

### Multi-language Installation

During StarOffice setup the user can select which languages should be installed. The user can switch between these languages.

How to access: Tools – Options – Language settings – User Interface

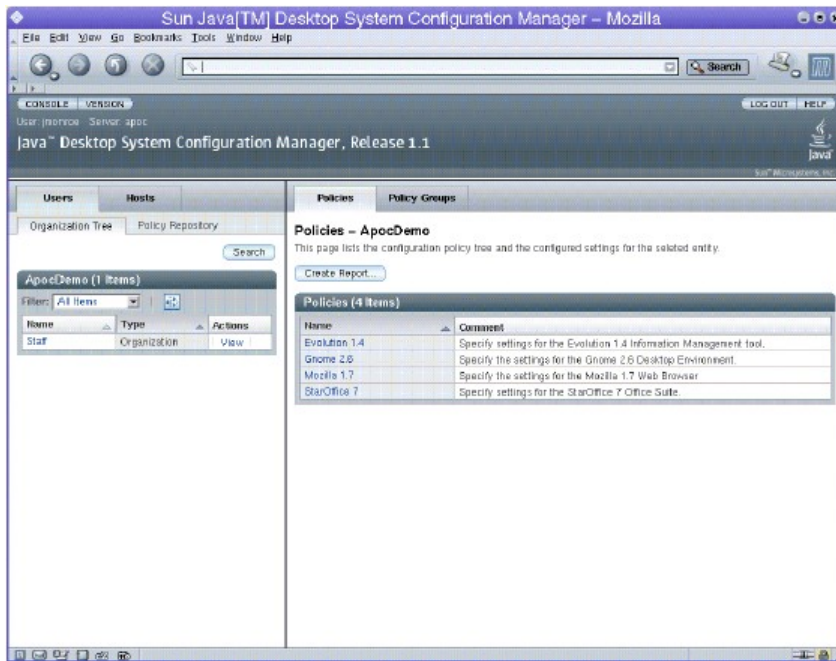
### Central Configuration Tool (Enterprise Edition only)

The JDS Configuration Manager is the solution for central management of StarOffice configuration settings. With this tool it is possible to view, define, and enforce StarOffice configuration settings on different levels of an organization's hierarchy (such as organization, group or user level). These settings ('policies') are stored in a central configuration repository (usually an existing enterprise LDAP server). This way an administrator can prevent unsophisticated StarOffice users from reconfiguring a system, violating security policies, repositioning icons, etc.

The JDS Configuration Manager is part of the StarOffice Enterprise Edition (the Enterprise Edition is available from Sun sales, please visit [www.sun.com/sales](http://www.sun.com/sales) for more information) and replaces the StarOffice™ Configuration Manager (SCM) of StarOffice 7, adding the following new features:

- **Improved User Interface:** The user interface is completely redesigned. It provides a better overview of all configuration items and offers simpler interaction with the user.
- **Performance and Scalability Improvements:** A local registry and incremental updates offer a much better performance during startup and runtime.
- **Profiles:** With profiles it is possible to group and organize settings. The profiles can be reused for different parts of your organization or individual users.

- **Reports:** Reports allow you to display a summary of resulting settings. It's possible to store or print out these reports for archive purposes.



## More Feature Highlights

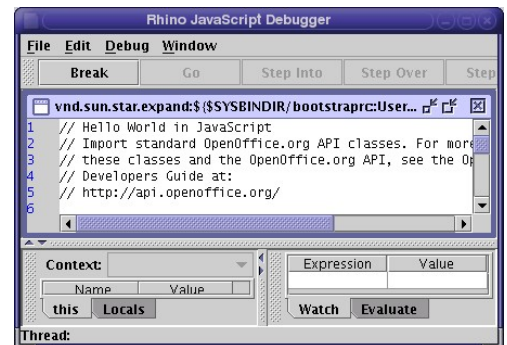
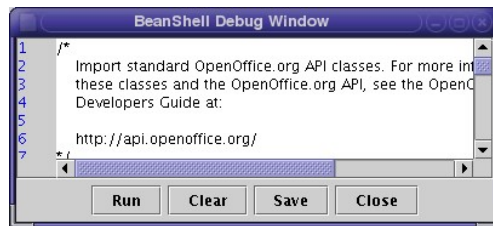
Feature	Benefit	How to Access
Simpler User Installation	The new installation mechanism allows a quicker and simpler workgroup or company-wide installation. StarOffice silently creates the user specific configuration at the very first start of StarOffice.	Start StarOffice for the first time
CUPS Integration	StarOffice on Linux provides easier printer selection, network printer browsing and PS printer description.	Only available on Linux
Language packs	Now language packs can be installed to enhance an already installed StarOffice version. You no longer need to install a complete office suite to get an additional language. User can switch between the installed languages	The setup of Language Pack installs the language automatically.
Display of read-only configuration elements	The StarOffice Configuration could be setup as write protected configuration items. These properties cannot be changed by the user. The configuration dialogs of StarOffice displays such items grayed out and with an additional padlock item.	Setup an Configuration item as protected and open the Options dialog. All protected configuration items are grayed out.
Automatic Java Configuration	The user can determine and maintain the Java environment of StarOffice. StarOffice typically uses the existing Java environment of the system. StarOffice installs a Java environment if an appropriated does not exists.	Tools – Options – StarOffice – Java. You do not have to select a version of Java manually as it will be done automatically. If the user switches Java off, then all other related settings will be disabled.

## Developer-Specific Features

StarOffice 8 builds on the strong developer offering in StarOffice 7 by adding two more programming languages, providing the capability to write macros in other languages (in addition to StarOffice Basic) and by enhancing the SDK and StarOffice Basic debugger. In addition, Developers get improved MS Office compatibility by being able to import Microsoft Office VBA dialogs.

### Support For Additional Macro Languages Added By Scripting Framework

StarOffice can be automated by scripting the StarOffice API in Java, JavaScript™ and Beanshell as well as StarOffice Basic. Macros written in Java can be developed in and deployed from NetBeans™. Editors for JavaScript and BeanShell, as well as the StarOffice Basic integrated development, ship with StarOffice.



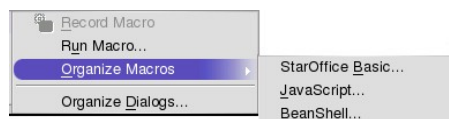
The framework could be extended by other programming languages. The OpenOffice.org community, for example, is currently working on a solution for Python. Users can assign code to menu items, keyboard shortcuts, application and document events, form controls within documents and various objects within documents.

### Programmatic Control Of Menu And Toolbar Items

Developers can adapt menu bar and toolbar layouts to their needs. Menus, pop up menus and toolbars are accessible via the API. They can be inserted, removed or modified at runtime in StarOffice.

### Basic IDE Macro Chooser And Macro Organizer

The Scripting Framework allows the user to develop macros in languages other than StarOffice Basic. The Macro Organizer helps to manage the macros. Users will find access to the various dialogs for Macro management via Tools – Macros submenu.



## More Feature Highlights

Feature	Benefit	How to Access
New Package Manager	The Package Manager is a tool to import, export and remove packages, i.e. extensions to the StarOffice installation. An extension can be a document with a script or an Universal Network Object (UNO) component.	Choose Tools – Package Manager The dialog shows all available packages, related to the context in which they reside, e.g. the User Installation, the Office Installation layer, or open documents. Please also see “unopkg -h” via command line.
SDK Improvements	<p><b>Transparent Use of UNO Components from C++ and Java</b> The UNO component context is provided in a more transparent way. From the perspective of the client code there is no difference between local and remote components.</p> <p><b>Javemaker generates .class instead of .java files</b> The javemaker tool (generating Java classes for UNOIDL entities) now directly generates Java .class files, instead of .java source files.</p> <p><b>Office Bean</b> With the OfficeBean, a developer can easily write Java applications, harnessing the power of StarOffice. It encapsulates a connection to a locally running StarOffice process, and hides the complexity of establishing and maintaining that connection from the developer.</p> <p><b>Increases Usability of UNO</b> UNO now supports multiple-inheritance interface types. The “queryInterface” call is no longer required for those new interfaces. Code can be generated for the new single interface based services i.e. constructors.</p>	The SDK is available in the StarOffice Enterprise Edition
Import of VBA dialogs	Microsoft Office documents with attached VBA dialogs get imported as StarOffice Dialogs. These dialogs can be used by the Scripting Framework programming language.	Load a Microsoft Office document with a VBA dialog Choose Tools – Macros – Organize Dialogs
Improved Basic Debugger with Property Browser	The debugger for StarOffice Basic now has a property browser, which offers the ability to display the type list of available properties with the values at the runtime of the Macro.	Tools – Macros – Organize Macros – StarOffice Basic -> Debugger
Redesign of how to bind macros and events	The Events tab page of the Customize dialog has been improved to make it easier for users to create event bindings.	Choose Tools – Customize – Events



## Internationalization Features

StarOffice 8 adds a number of features to improve installation, usability and readability across the global languages supported by StarOffice. Installation of individual, modular language packs makes it much easier for the user to switch between languages.

Note that StarOffice in Asian languages (Simplified Chinese, Traditional Chinese, Japanese, and Korean, also referred to as CJK) is known as StarSuite™.

### Translator For Simplified To Traditional Chinese And Vice Versa

Easily transfer Chinese written text between simplified Chinese and traditional Chinese characters. Similar to the translation or conversion that happens between Japanese Hiragana/Katakana and Korean Hangul/Hanja.

How to access: Choose Tools – Language. This feature is only available when CJK support under “Tools – Options – Language Settings – Languages” is turned on. Otherwise the entry will remain hidden.

### Language Packs

Now language packs can be installed to enhance an already installed StarOffice version. You no longer need to install a complete office suite for each language. User can switch in between the installed languages

### More Feature Highlights

Feature	Benefit	How to Access
New locale data in language list box	New locale data for: Malaysian, Bulgarian, Interlingua, Serbian Latin, Serbian Cyrillic, Croatian, Bosnian, Mongolian, Azerbaijani, Galician, Dhivehi, Northern Sotho, Gaelic, Bengali (Bangladesh), Occitan, Khmer, North Korea: Korean (DPRK), South Korea: (RoK), Lithuanian (Lithuania) and several more	Choose Tools – Options – Language Settings – Languages
Numbering extended for Chinese simplified and Japanese	The detection of numbering is now able to detect Chinese periods (0x3002) and Brackets (0xff08 and 0xff09 used in Chinese simpl. and Japanese) and for Japanese the space (0x3000), numerals (0xff10 ...0xff19) and period (0xff0e)	Format – AutoFormat

Feature	Benefit	How to Access
Enhanced Character Spacing	<p>In Japanese glyphs are often aligned in grids. Most Japanese users do not assign a full grid box to a punctuation mark such as a '.' or the like but have them attached to their preceding character.</p> <p>In StarSuite this (already existing) functionality will be enhanced to allow the user to define manually a list of characters that will be attached to their preceding character instead of just having a fixed set of characters.</p>	In Japanese version only
Right-to-left spreadsheet layout	Spreadsheets can be switched to right-to-left layout, where column A is right.	Format – Sheet – Right-To-Left, when CTL support is enabled in the options dialog.

## System Requirements

---

Below are the system requirements for the StarOffice 8 Beta:

### Microsoft Windows

- MS 98, ME, 2000 (Service Pack 2 or higher) or XP  
(Please note the discontinuation of support of Windows NT)
- Pentium compatible PC
- 128 Mbytes RAM
- 250 Mbytes available hard disk space
- 800 x 600 or higher resolution graphic device with 256 colors

### Solaris Operating Environment: SPARC Platform Edition

- Solaris 8 OS or higher. Solaris 9 is recommended
- 128 Mbytes RAM
- 400 Mbytes available hard disk space
- X-Server with 800 x 600 or higher resolution with 256 colors
- Gnome 2.0 or higher required for support of assistive technology tools

### Solaris Operating Environment: X86 Platform Edition

- Solaris 8 OS or higher. Solaris 9 is recommended
- 128 Mbytes RAM
- 400 Mbytes available hard disk space
- X-Server with 800 x 600 or higher resolution with 256 colors
- Gnome 2.0 or higher required for support of assistive technology tools

### Linux

- Linux kernel version 2.2.13 or higher glibc2 version 2.2.0 or higher
- Pentium compatible PC
- 128 Mbytes RAM
- 350 Mbytes available hard disk space
- X-Server with 800 x 600 or higher resolution with 256 colors